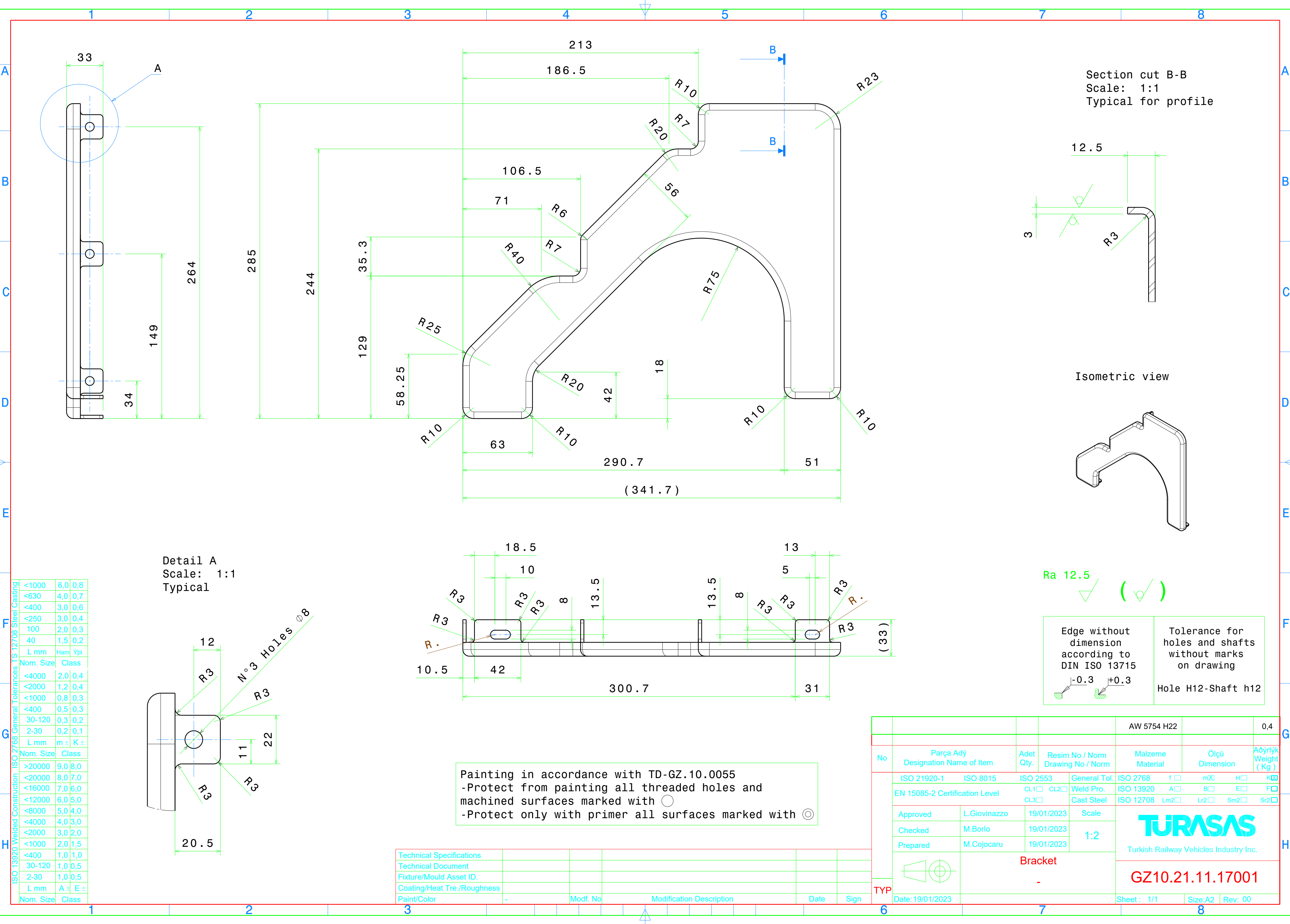


Reproduction, dissemination or use of this document or its contents in any form without the prior written permission of TURASAS, is prohibited. Offenders will be liable for the payment of damages. All rights reserved in the event of the grant of a patent, utility model or industrial design registration.



ISO 13920 Welded Construction	<1000	6,0	0,8
	<630	4,0	0,7
ISO 2768 General Tolerances	<400	3,0	0,6
	<250	3,0	0,4
ISO 2768 General Tolerances	100	2,0	0,3
	40	1,5	0,2
ISO 2768 General Tolerances	L mm	Ham	Ypl.
	Nom. Size	Class	
ISO 2768 General Tolerances	<4000	2,0	0,4
	<2000	1,2	0,4
ISO 2768 General Tolerances	<1000	0,8	0,3
	<400	0,5	0,3
ISO 2768 General Tolerances	30-120	0,3	0,2
	2-30	0,2	0,1
ISO 2768 General Tolerances	L mm	m ±	K ±
	Nom. Size	Class	
ISO 2768 General Tolerances	>20000	9,0	8,0
	<20000	8,0	7,0
ISO 2768 General Tolerances	<16000	7,0	6,0
	<12000	6,0	5,0
ISO 2768 General Tolerances	<8000	5,0	4,0
	<4000	4,0	3,0
ISO 2768 General Tolerances	<2000	3,0	2,0
	<1000	2,0	1,5
ISO 2768 General Tolerances	<400	1,0	1,0
	30-120	1,0	0,5
ISO 2768 General Tolerances	2-30	1,0	0,5
	L mm	A ±	E ±
ISO 2768 General Tolerances	Nom. Size	Class	

				AW 5754 H22		0,4
No	Parça Adı Designation Name of Item	Adet Qty.	Resim No / Norm Drawing No / Norm	Malzeme Material	Ölçü Dimension	Ağırlık Weight ( Kg )
ISO 21920-1		ISO 8015	ISO 2553	General Tol.	ISO 2768	f <input type="checkbox"/> mX <input type="checkbox"/> H <input type="checkbox"/> K <input type="checkbox"/>
EN 15085-2 Certification Level		CL1 <input type="checkbox"/> CL2 <input type="checkbox"/> CL3 <input type="checkbox"/>	Weld Pro. Cast Steel	ISO 13920	A <input type="checkbox"/> B <input type="checkbox"/> E <input type="checkbox"/> F <input type="checkbox"/>	
Approved	L.Giovinazzo	19/01/2023	Scale	 Turkish Railway Vehicles Industry Inc.		
Checked	M.Borlo	19/01/2023	1:2			
Prepared	M.Cojocar	19/01/2023				
Bracket				GZ10.21.11.17001		
Date: 19/01/2023		Sheet : 1/1		Size: A2	Rev: 00	